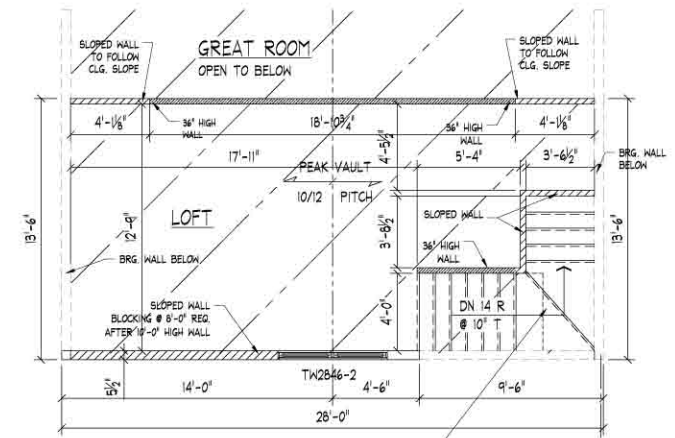


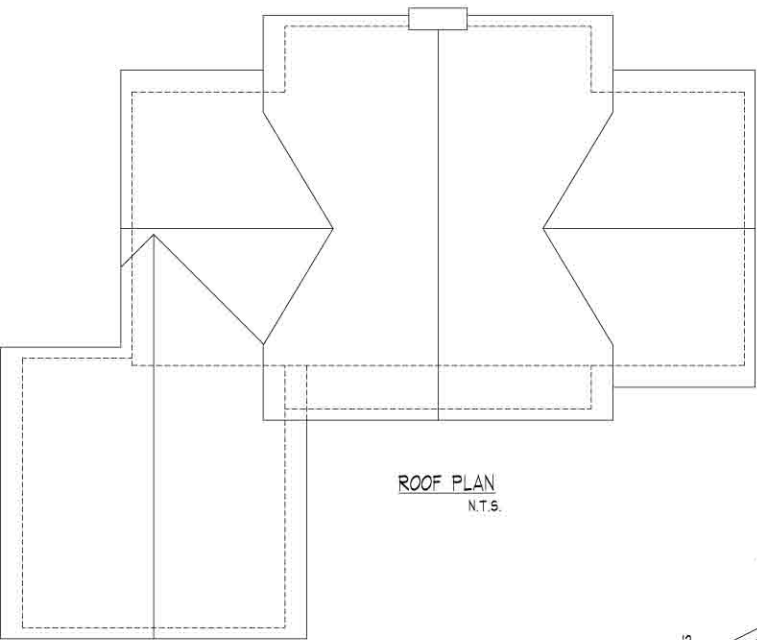
**FLOOR PLAN**  
1577 SQ. FT. 1/4" = 1'-0"

FIRST FLOOR 1577 SQ. FT.  
SECOND FLOOR 377 SQ. FT.  
TOTAL 1954 SQ. FT.



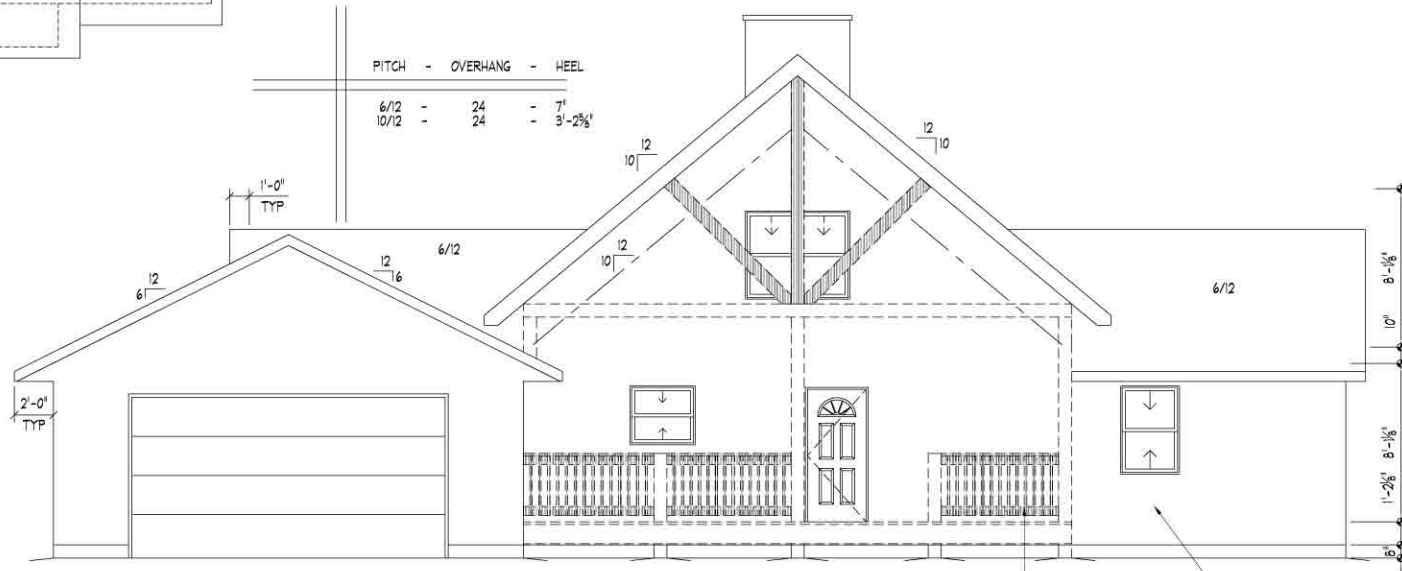
**LOFT PLAN**  
377 SQ. FT. 1/4" = 1'-0"





PITCH - OVERHANG - HEEL

6/12	-	24	-	7'
10/12	-	24	-	3'-2 3/8"

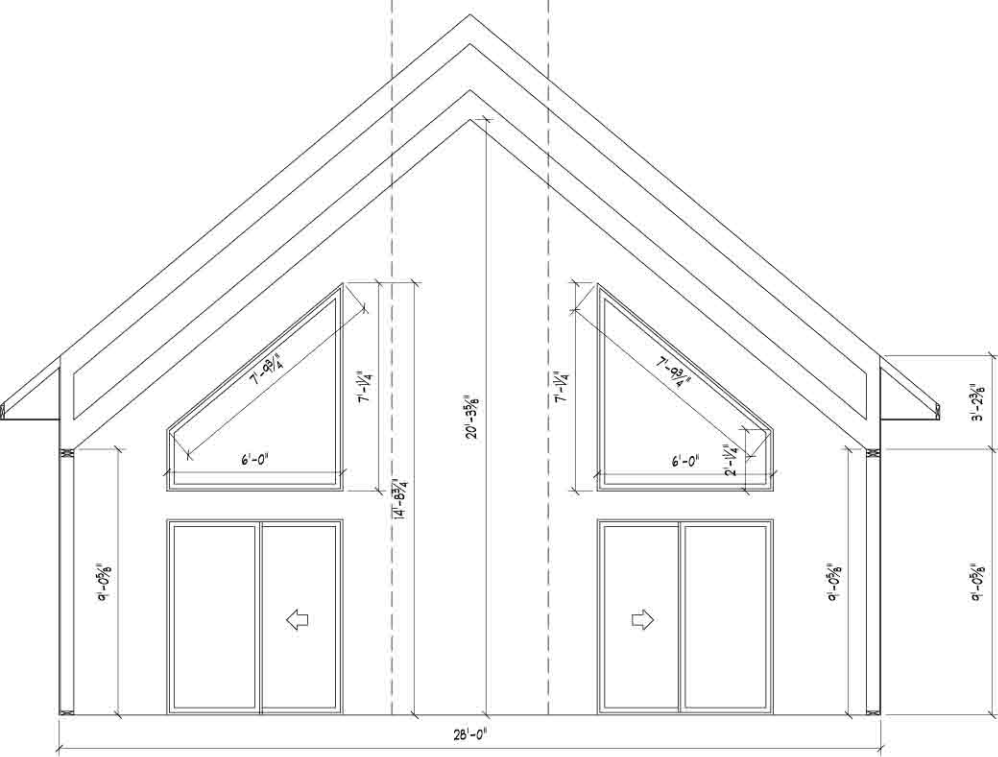


FRONT ELEVATION  
1/4" = 1'-0"

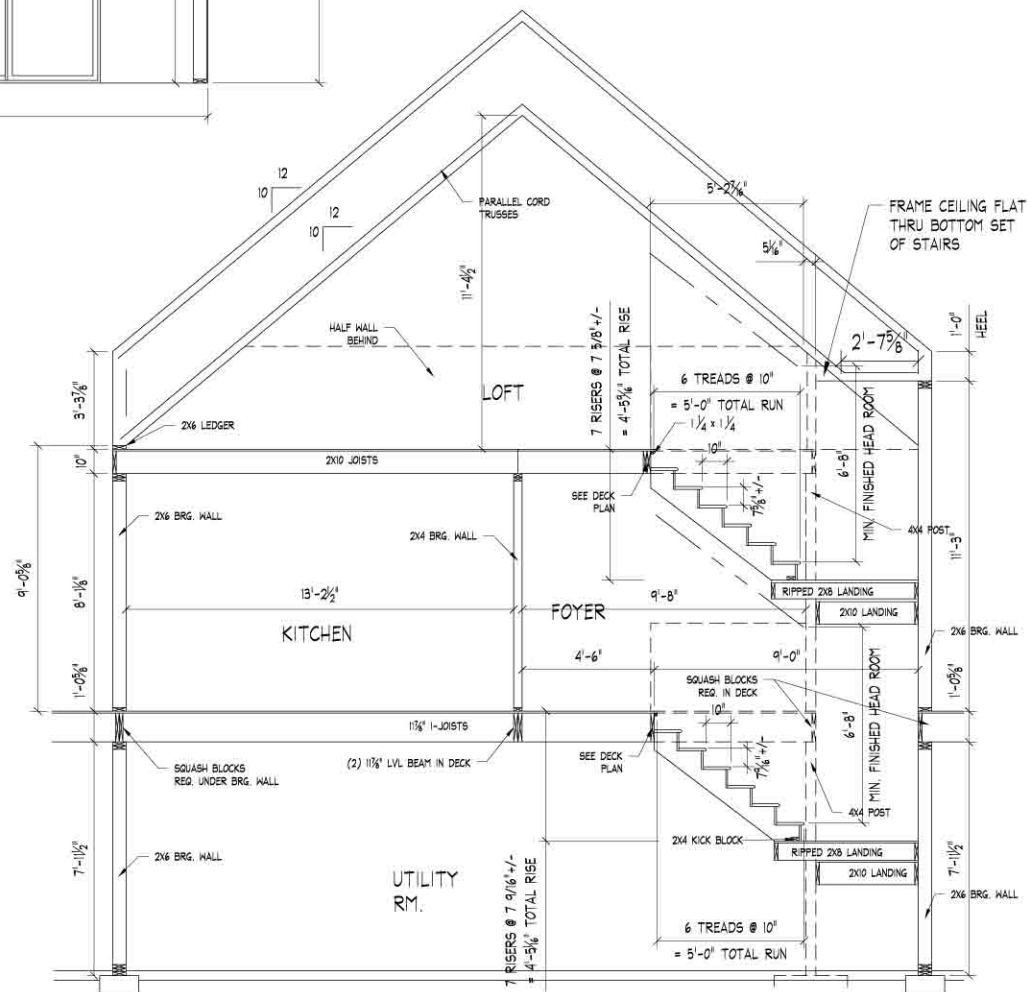
ALL RAILINGS, DECKING,  
PORCH SUPPORT FRAMING,  
AND POSTS BY OTHERS

HALF LOG SIDING  
BY OTHERS

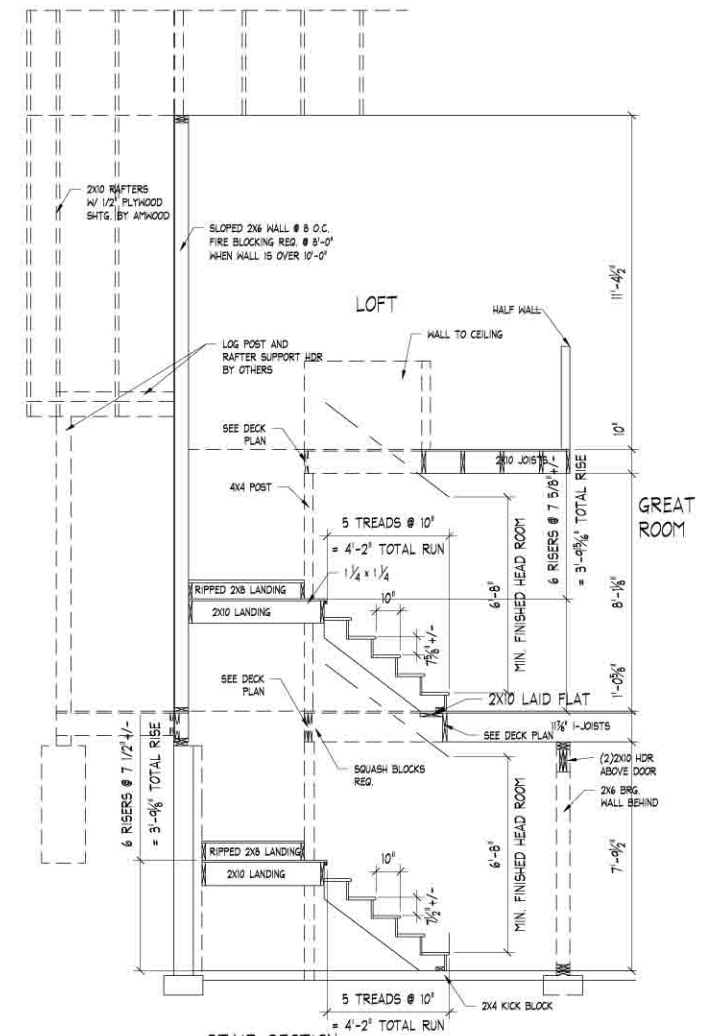




GREAT ROOM WALL SECTION  
3/8" = 1'-0"



LOFT / STAIR SECTION  
3/8" = 1'-0"



STAIR SECTION  
3/8" = 1'-0"